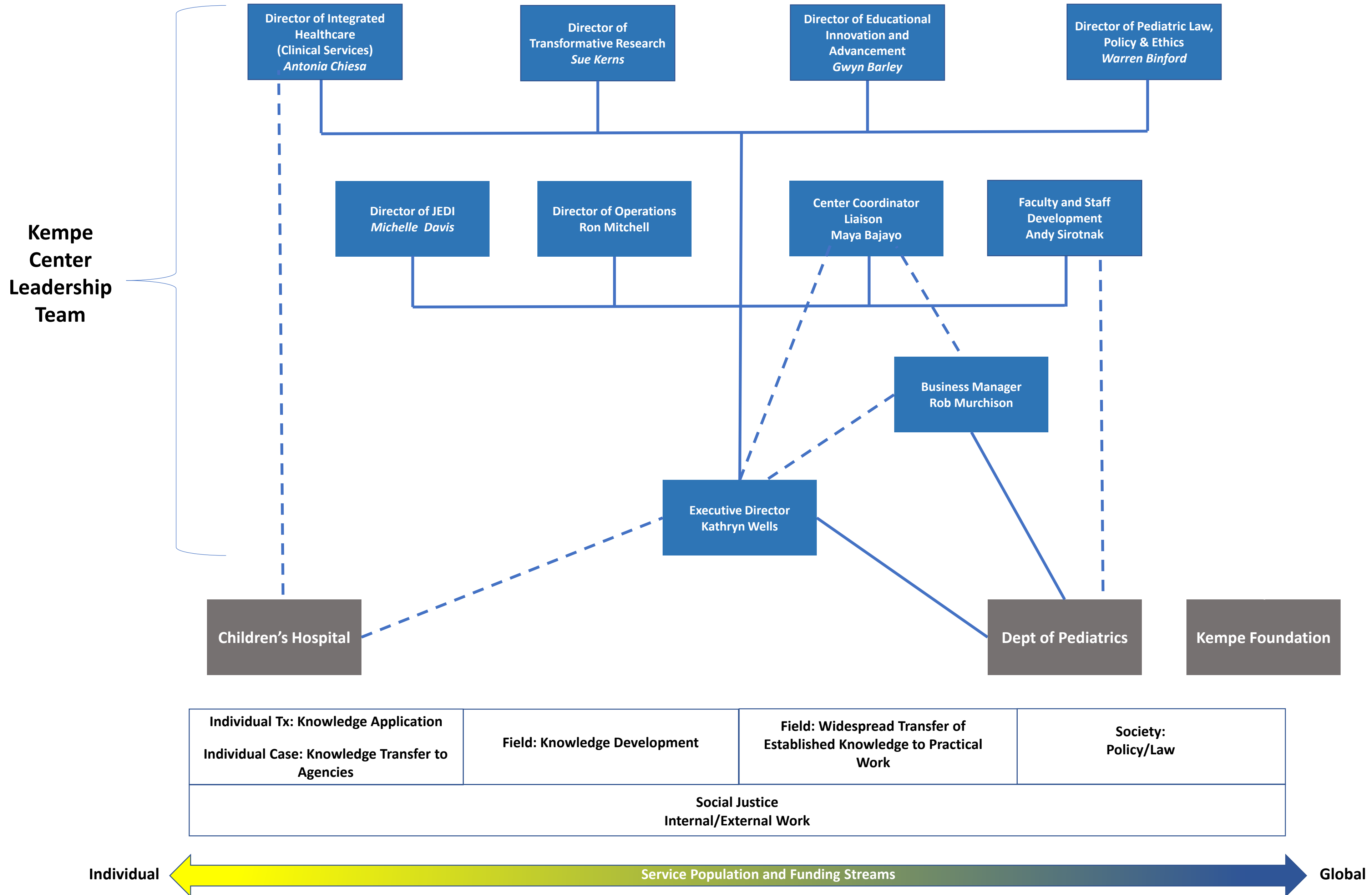
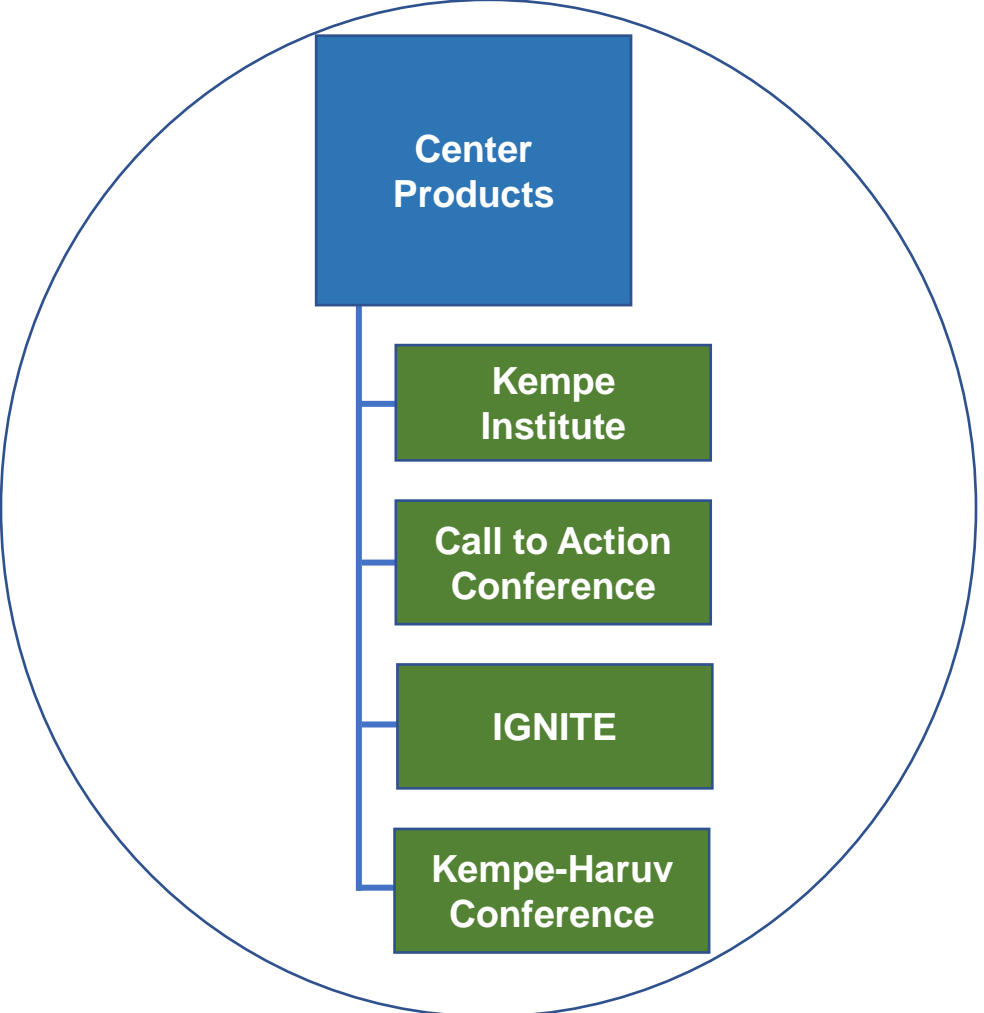
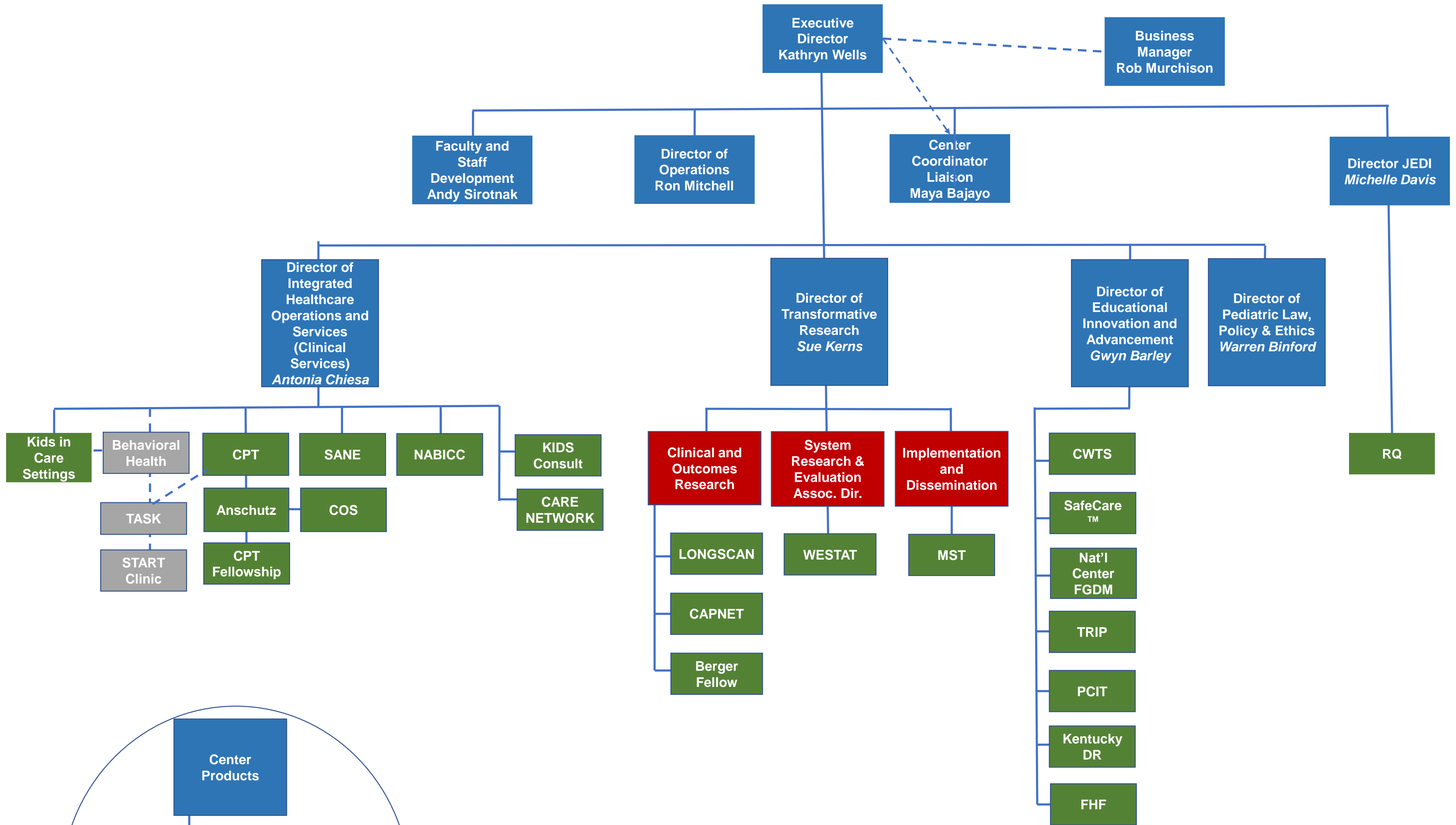


The Kempe Center Organizational Structure

Intentional Structure Design: The Kempe Center Leadership Team provides support for the work of the Center (programs, faculty and staff). The team helps ensure the organization has an effective structure and funding, that the Center identity and branding are recognized internally and externally, and that the Center’s culture advances employee growth and wellbeing, as well as a focuses on JEDI principles (Justice, Equity, Diversity and Inclusion) in everything we do.



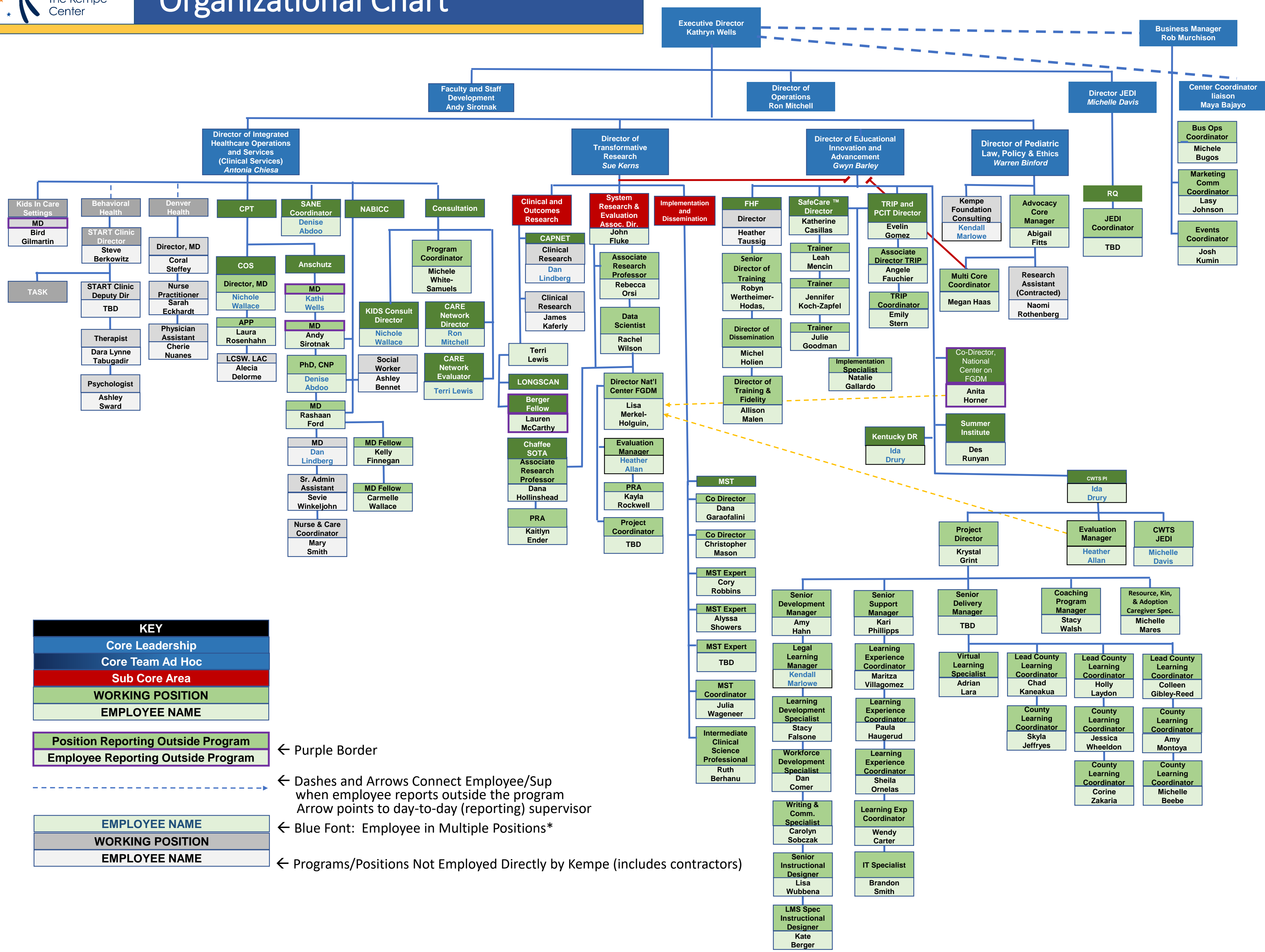
The Kempe Center Programs Chart



KEY	
Kempe Center Leadership Team	
Sub Core Area	
PROGRAM/PROJECT	
Collaborative Program (other agency)	



Organizational Chart



KEY

- Core Leadership
- Core Team Ad Hoc
- Sub Core Area
- WORKING POSITION
- EMPLOYEE NAME

Position Reporting Outside Program
Employee Reporting Outside Program ← Purple Border

← Dashes and Arrows Connect Employee/Sup when employee reports outside the program
Arrow points to day-to-day (reporting) supervisor

EMPLOYEE NAME
WORKING POSITION
EMPLOYEE NAME ← Blue Font: Employee in Multiple Positions*

← Programs/Positions Not Employed Directly by Kempe (includes contractors)